



Paleisheuvel Solar Power Plant

Other names: Electra Capital Solar Farm

Paleisheuvel Solar Power Plant is an operating solar farm in Cederberg Local Municipality, West Coast District Municipality, Western Cape, South Africa.

This article is part of the **Global Solar Power Tracker** (<https://globalenergymonitor.org/projects/global-solar-power-tracker/>), a **Global Energy Monitor** (<http://globalenergymonitor.org>) project.

[Report an error](https://globalenergymonitor.org/home/error-reporting-solar/) (<https://globalenergymonitor.org/home/error-reporting-solar/>)

Contents

- 1 Project Details
 - 1.1 **Table 1:** Phase-level project details for Paleisheuvel Solar Power Plant
- 2 Location
 - 2.1 **Table 2:** Phase-level location details for Paleisheuvel Solar Power Plant
- 3 Background
- 4 Articles and Resources
 - 4.1 Additional data
 - 4.2 References

Project Details

Table 1: Phase-level project details for Paleisheuvel Solar Power Plant

Status	Commissioning year	Nameplate capacity	Technology	Owner	Operator
Operating ^[1]	2016 ^[2]	83 MWp/dc ^[1]	PV	Enel Green Power SPA ^[3]	Enel Green Power SPA ^[1]

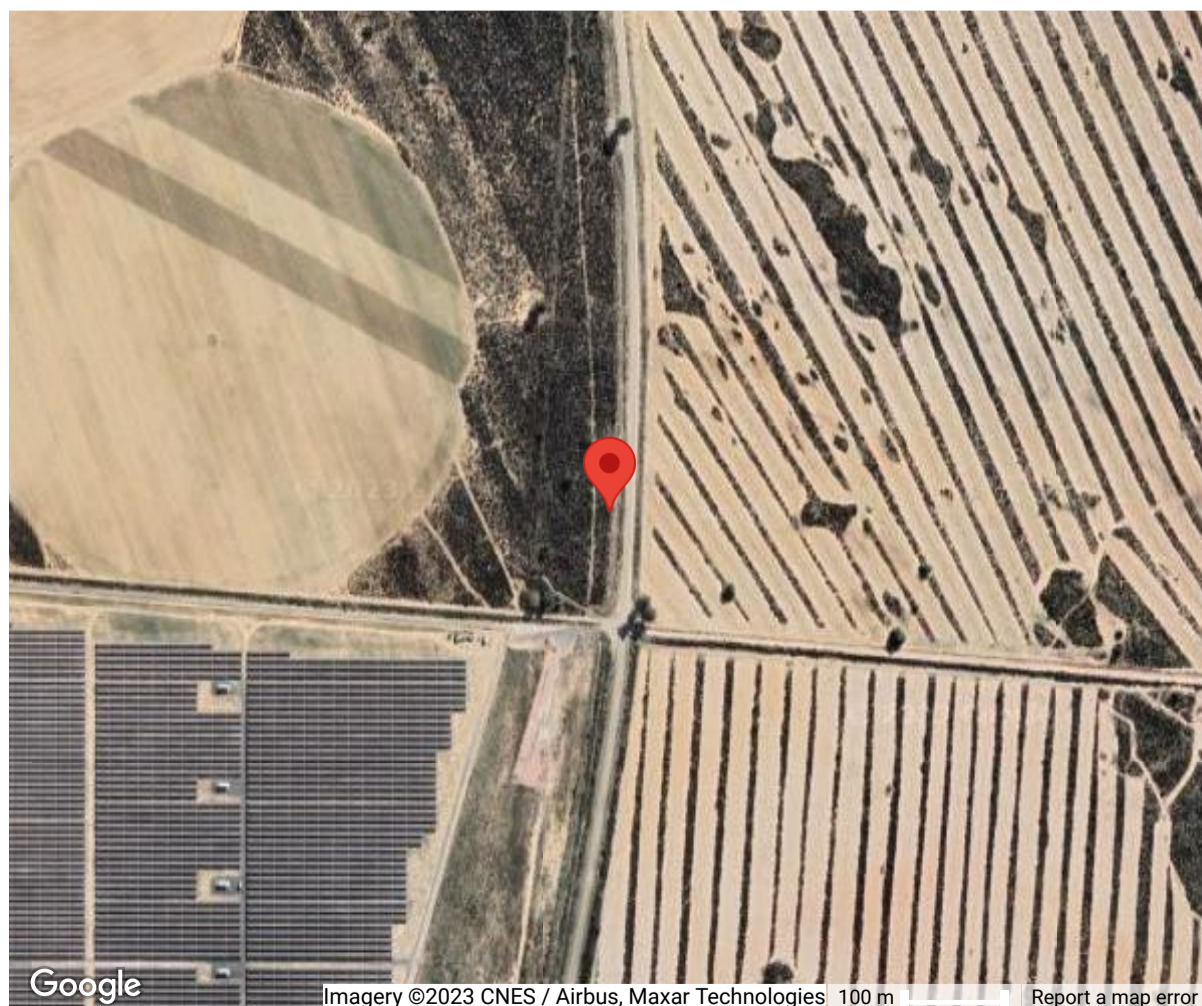
Read more about solar capacity ratings (https://www.gem.wiki/Solar_capacity_ratings).

Location

Table 2: Phase-level location details for Paleisheuvel Solar Power Plant

Location	Coordinates (WGS 84)
Cederberg Local Municipality, West Coast District Municipality, Western Cape, South Africa ^[4]	-32.4148, 18.7379 (exact) ^[4]

The map below shows the exact location of the solar farm phase:



Background

Articles and Resources

Additional data

To access additional data, including an interactive map (<https://globalenergymonitor.org/projects/global-solar-power-tracker/tracker-map/>) of global solar farms, a downloadable dataset (<https://globalenergymonitor.org/projects/global-solar-power-tracker/download-data/>), and summary data (<https://globalenergymonitor.org/projects/global-solar-power-tracker/summary-tables/>), please visit the Global Solar Power Tracker (<https://globalenergymonitor.org/projects/global-solar-power-tracker/>) on the Global Energy Monitor website.

References

1. "South Africa" (<https://web.archive.org/web/20210316110312/https://www.enelgreenpower.com/countries/africa/south-africa>). *Enel Green Power*. Archived from the original (<https://www.enelgreenpower.com/countries/africa/south-africa>) on March 16, 2021. Retrieved December 13, 2021.
2. "Paleisheuwel Photovoltaic Power Plant Connected To Grid" (<https://web.archive.org/web/20210913160437/https://www.enca.com/south-africa/paleisheuwel-photovoltaic-power-plant-connected-to-grid>). *Enca*. Archived from the original (<https://www.enca.com/south-africa/paleisheuwel-photovoltaic-power-plant-connected-to-grid>) on September 13, 2021. Retrieved December 13, 2021.
3. <https://www.engineeringnews.co.za/article/enels-825-mw-paleisheuwel-solar-plant-connected-to-the-grid-2016-05-04> (<https://www.engineeringnews.co.za/article/enels-825-mw-paleisheuwel-solar-plant-connected-to-the-grid-2016-05-04>). Archived (<https://web.archive.org/web/20220428191007/https://www.engineeringnews.co.za/article/enels-825-mw-paleisheuwel-solar-plant-connected-to-the-grid-2016-05-04>) from the original on April 28, 2022.
4. "Paleisheuwel Pv Solar Park" (<https://web.archive.org/web/20210913153523/https://www.google.com/maps/place/Paleisheuwel+PV+Solar+Park/@-32.4263351,18.7300914,6288m/data=!3m1!1e3!4m5!3m4!1s0x1c33011fa0fa5b1d:0x5bbc3d0950150aa9!8m2!3d-32.4158673!4d18.7380399?hl=en-GB&shorturl=1>). *Google Maps*. Archived from the original (<https://goo.gl/maps/6irgpadnCJb42WPe7>) on September 13, 2021. Retrieved December 13, 2021.

Retrieved from "https://www.gem.wiki/w/index.php?title=Paleisheuwel_Solar_Power_Plant&oldid=374602"

This page was last edited on 21 December 2022, at 15:24.

Content is available under Creative Commons Attribution-NonCommercial-ShareAlike unless otherwise noted.